



Ports & Terminals

Demonstrated Capability



**PORT &
MARINE
ENGINEERING**



**COASTAL
ENGINEERING**



**TERMINAL
OPERATIONS**



**MASTERPLAN
& LAND USE**



LOGISTICS



ECONOMICS



SUSTAINABILITY



**STRATEGIC
ADVICE**



**ENERGY
SYSTEMS**



**BALANCED
MACHINES**



**DIGITAL &
AUTOMATION**



**CLIMATE
CHANGE**

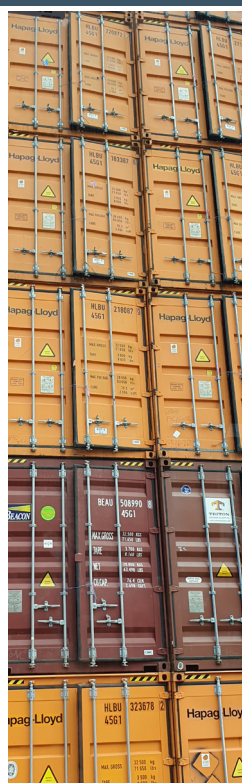


About Hatch

Hatch is an employee-owned, multidisciplinary professional services firm that delivers a comprehensive array of technical and strategic services, including consulting, engineering, economics, urban planning, process development, and project and construction management to the Mining, Metals, Energy, and Infrastructure sectors.

Hatch has served clients for over six decades with corporate roots extending over 100 years and has project experience in more than 150 countries around the world.

Our Ports & Terminals team deliver value to our clients through our exceptional ideas and service offerings, with our key differentiators being specialist engineering, our PCM capability and our sophisticated digital offering. These differentiators are targeted to ensure cost effective and efficient delivery.



Meet Hatch's Ports & Terminals Team in Australia



Michael Houen

DIRECTOR, SMART
PORT STRATEGY



Ravi Segu

PRINCIPAL, MARITIME
STRUCTURAL ENGINEERING



Duan Viljoen

GLOBAL
COASTAL LEAD



Claire Treeby

DIRECTOR,
PORTS & TERMINALS
AUSTRALIA-ASIA
claire.treeby@hatch.com
(08) 9428 5000



Jaron Evans

BULK MATERIALS
HANDLING SPECIALIST



Peter Fairbrother

PORT PROJECT
ENGINEERING MANAGER



Bradley Smith

SENIOR COASTAL
ENGINEER



Nathaniel Buldo

MARITIME STRUCTURAL
ENGINEER



Stephen Jenks

STRUCTURAL
ENGINEER



Ryan Nguyen

SENIOR COASTAL
ENGINEER



Anchen Buys

PORT PLANNER



Zay Zin

PORT & COASTAL
ENGINEER



Charlotte Uphues

COASTAL ENGINEER



Andrew Catto

GLOBAL DIRECTOR,
PORTS & TERMINALS
andrew.catto@hatch.com

**Supported by global Ports
and Terminals expertise in:**

- CANADA
- USA
- UNITED KINGDOM
- MIDDLE EAST
- SOUTH AFRICA
- INDONESIA

Phone: (07) 3166 7777

www.hatch.com/Expertise/Infrastructure/PortsandTerminals

